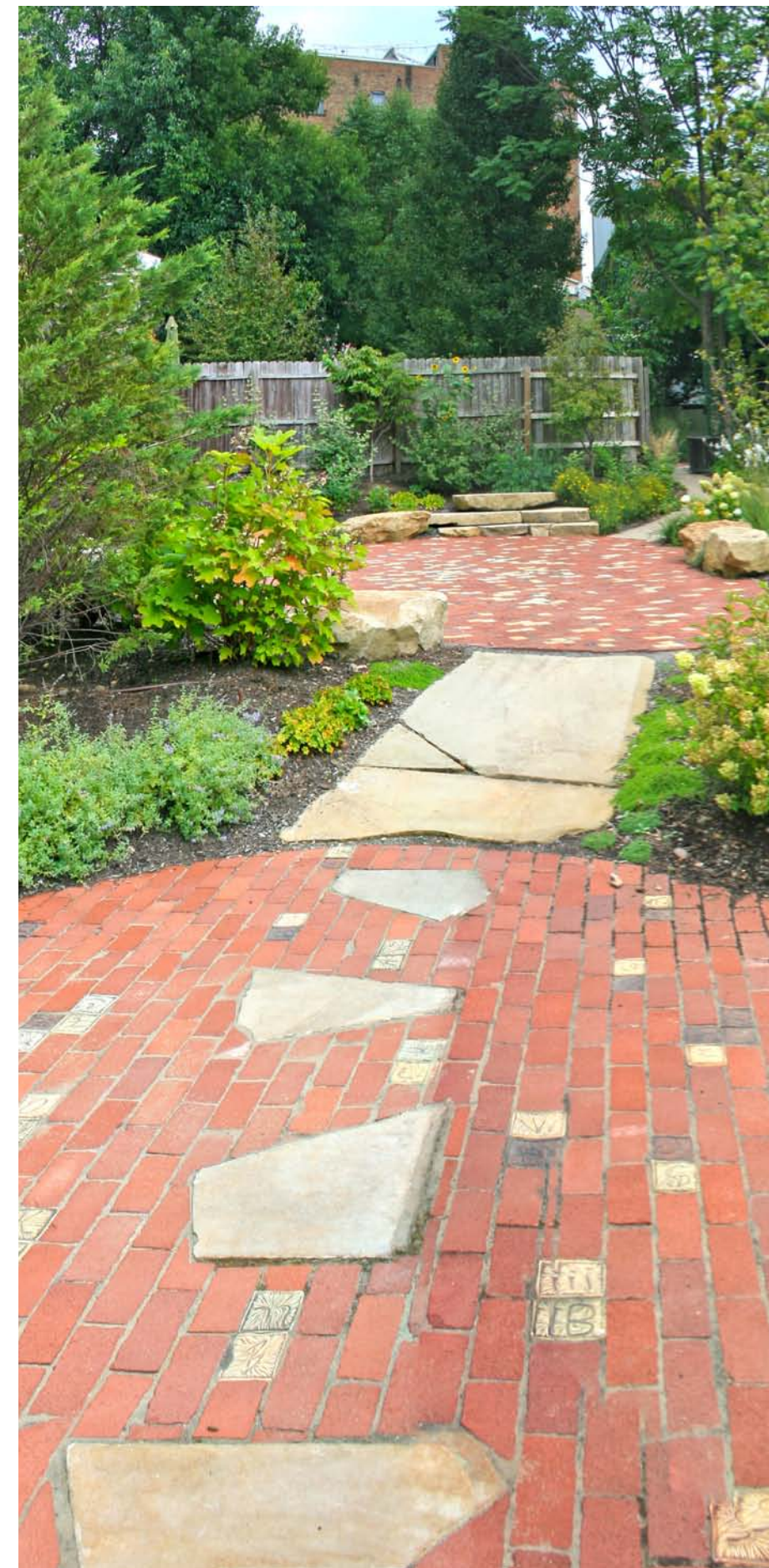




# Alphabet Reading Garden



*Designed by Joel Legual, and installed by Eisler Landscapes in 2016, the Alphabet Reading Garden is an extension of City of Aslyum. Included in the paving are custom pavers featuring letters drawn by guests to City of Aslyum events. Planted with a mix of traditional and native plants, the garden matches both the historic and progressive nature of the Mexican War Streets neighborhood. Over 30 native plant species can be seen in this garden which should be a neighborhood amenity for years to come.*

Poster by Jennifer Deemer  
October, 2016